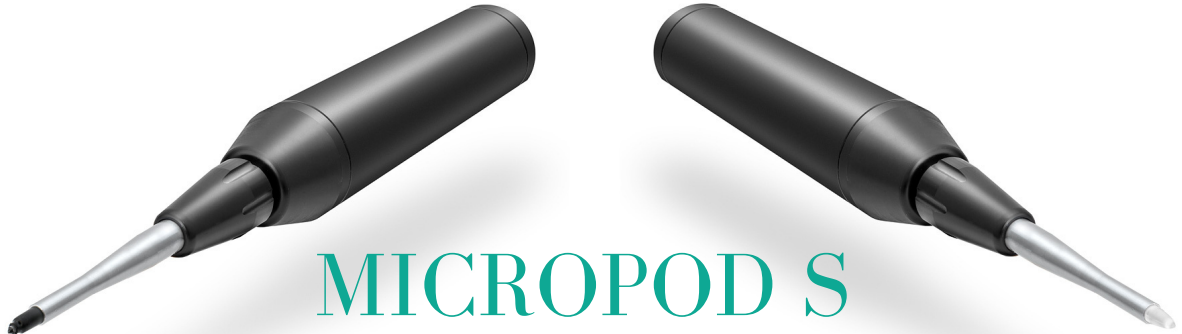


# MICROPODS

*MicroPods are single sensor units that provide analog data and can be used in laboratory installation or in conjunction with autonomous underwater vehicles. Up to 8 MicroPods can be combined by utilizing a DataHub to provide signal input for the different modules.*



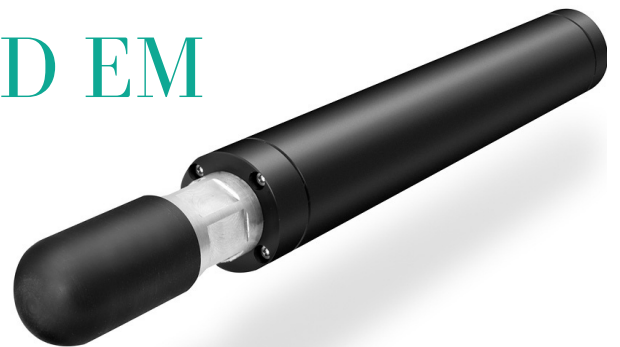
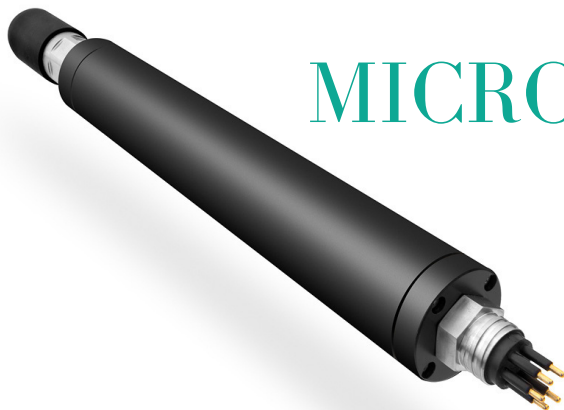
## MICROPOD S

*MicroPod S is a velocity shear module and will help measure the water speed.*



## MICROPOD T

*MicroPod T is a fast response temperature module. This module helps measure and transmit temperature variances that could create turbulence.*



## MICROPOD EM

*MicroPod EM is an electromagnetic flow sensor designed to measure the flow speed of water.*