

LEAD-ACID TO LITHIUM-IRON PHOSPHATE BATTERY REPLACEMENT.

FOR TOP QUALITY COATINGS, LTD.



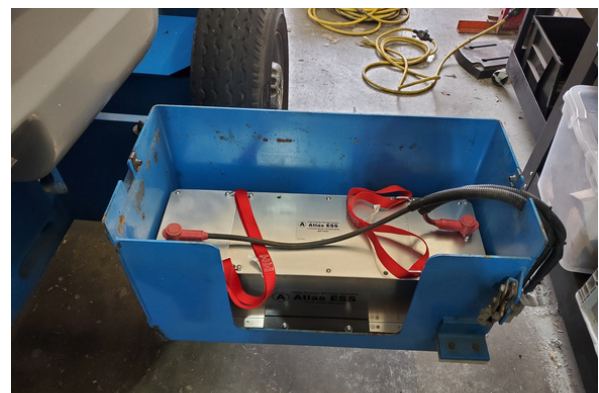
Original lead-acid batteries being removed from genie lift.



Battery back during assembly process using lithium-iron phosphate modules with a total of 7.2 kWh capacity.



An Atlas ESS enclosure configured to fit the battery bay in the Genie-Telescopic boom lift.



Battery pack installed on both sides of the Genie- Telescopic boom lift as it requires one battery per side providing a total capacity of 14.4 kWh.